

inpEV

Sustainability Report 2025

SUMMARIZED
VERSION

Introduction

This is the abridged version of the 2025 Sustainability Report of the National Institute for Processing Empty Packages (inpEV) which presents the main results of the Campo Limpo System, the Brazilian program for the reverse logistics of empty crop protection packaging, and of inpEV, which represents the manufacturing industry of the System.

Message from the president

The year of 2025 showcased a consistent growth for the Campo Limpo System and for inpEV. Amidst an agribusiness expansion scenario, we have increased the environmentally correct disposal of empty crop protection packaging, strengthened our operational efficiency and made headway regarding our sustainability agenda. We have disposed of 75,996 tons of packaging, an 11% increase compared to 2024. The System continues to increase its capillarity - four new central stations, nine outposts and a record high of itinerant collection stations - besides our operational efficiency, with overhauled receiving stations, innovation and staff training. The 2025 results reassure our commitment towards more appropriate packaging disposal for the sector and for all of us.

Enjoy your reading!

Marcelo Okamura
inpEV CEO

The Campo Limpo System and inpEV

Responsible management of crop protection packaging is one of the sustainability pillars of Brazilian agribusiness. Within this context, the National Institute for Processing Empty Packages (inpEV) acts as a representative of the manufacturing industry, one of the links of the Campo Limpo System, the national reverse logistics program for empty packaging and post-consumption leftovers. In December 2025, inpEV combined 235 companies and ten associated sector entities.

The System is a global reference and brings together farmers, distribution channels, manufacturing industry and the public

power on the shared responsibilities to keep fields free from empty packaging and works together for a better future for all.

Success of the Campo Limpo System is ensured by the responsible activities of each link of the agricultural sector and by a robust structure and efficient operations.



+900,000
tons of empty
packaging correctly
disposed of
since 2002

Operational excellence

The reverse logistics of empty crop protection packaging is a complex nationwide operation. In 2025, in step with the evolution of Brazil's agribusiness, the Campo Limpo System disposed of 75,996 tons of empty packaging, which represents an 11% growth when compared to 2024.

In order to handle this growth, it was important to expand infrastructure and improve operations. In 2025, the Campo Limpo System increased its network of central stations and outposts in

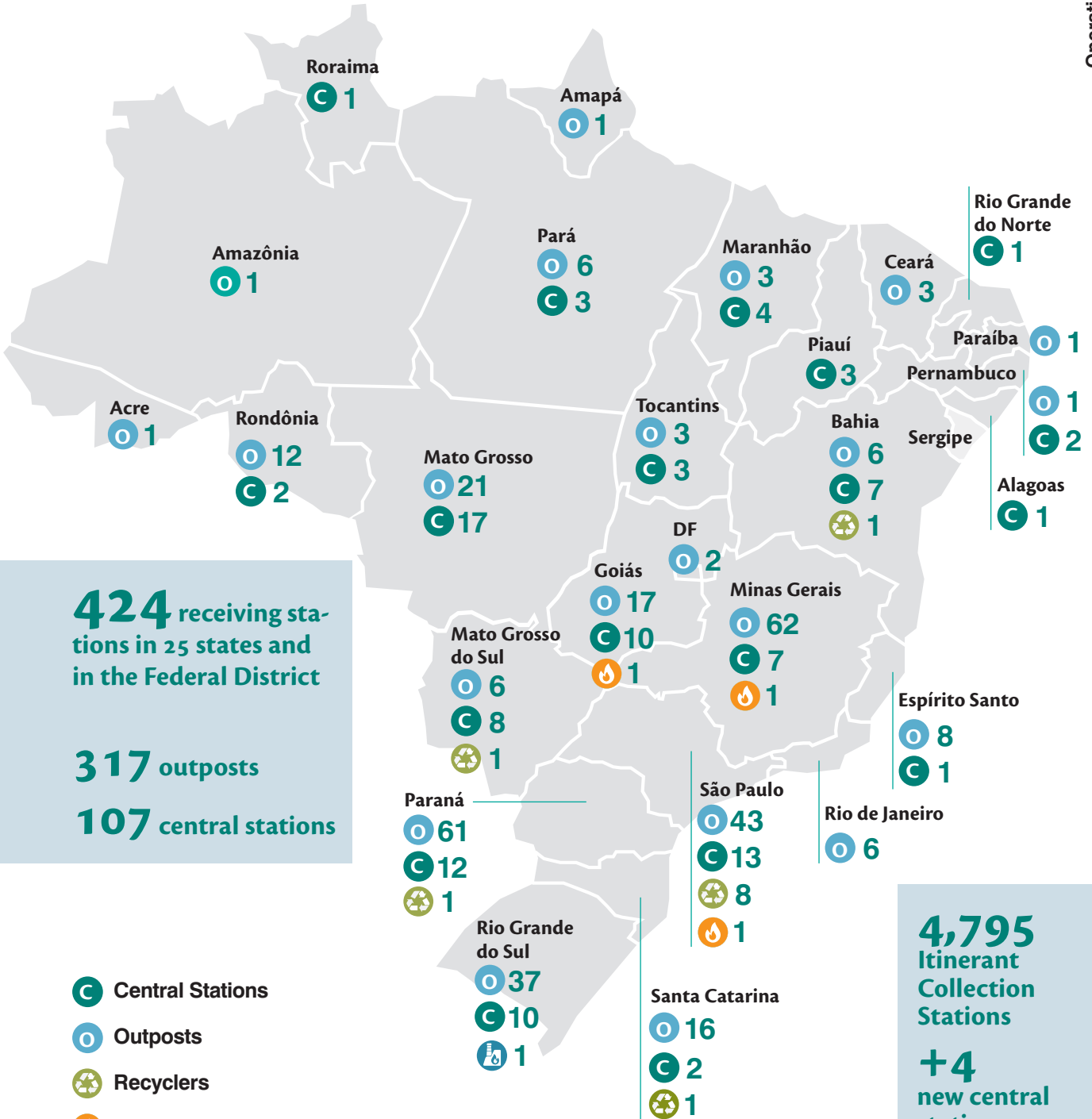
strategic agribusiness regions, thereby reinforcing its capacity to service farmers in different parts of the country. Itinerant collection stations were also key, by carrying out actions with partners in order to increase small farmer access to the System.

Besides managing part of the central stations, inpEV also coordinates empty packaging shipping from its units to its final destination, thereby ensuring standardization, traceability and reverse logistics security.

With the 7.98 million kilometers traveled by 18,809 trucks to ensure the correct disposal of crop protection packaging, it would be possible to circle the world 200 times.



Campo Limpo System: Where We Operate



424 receiving stations in 25 states and in the Federal District

317 outposts

107 central stations

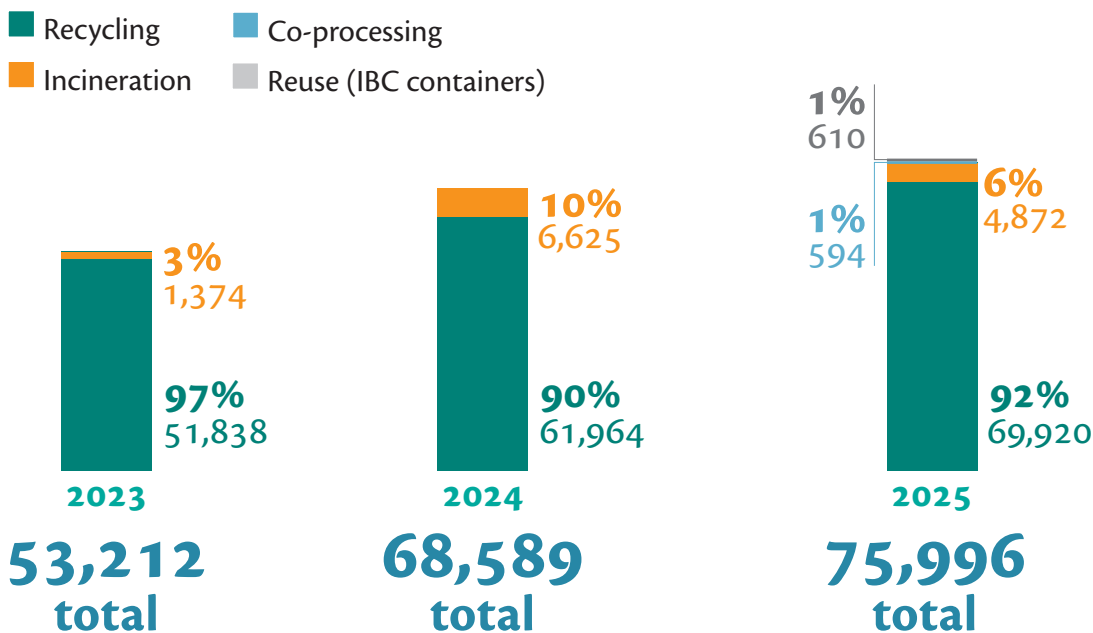
- Central Stations
- Outposts
- Recyclers
- Incinerators
- Blender

4,795 Itinerant Collection Stations

+4 new central stations

+9 new outposts

Final destination (in tons)



Efficiency gain

The receiving capacity gain of the Campo Limpo System is not just due to improvements in infrastructure. During the last two years, a period in which the correctly disposed packaging volume increased by 43%, the disposal expansion was also due to gains in processing efficiency at the central stations and in the logistics all the way down to the final destination.

This improvement results from a consistent efficiency agenda, combined with unit overhauls, training, investments in innovation and projects that increase productivity and reduce costs.

The System also supports the environmentally adequate disposal of seized illegal products. In 2025, 237 tons were incinerated.

Packaging volume disposed by state

States	Volume (t)	Share
Mato Grosso	22,865	30%
Paraná	8,728	11%
Rio Grande do Sul	6,762	9%
São Paulo	6,669	9%
Goiás	6,339	8%
Bahia	6,091	8%
Mato Grosso do Sul	5,244	7%
Minas Gerais	4,246	6%
Maranhão	2,218	3%
Tocantins	1,824	2%
Others	5,011	7%
Total	75,996	



Circularity and sustainability

The main environmental contribution of the Campo Limpo System is its very reverse logistics, since this ensures that spent packaging is returned, which allows for recycling and circular economy, thereby avoiding natural resources and reducing pollution and energy consumption. In 2025, 92% of received packaging was recycled. In the case of rigid primary plastic packages, the recycling rate is at 100%.

With recycling, plastic and other materials return to the economy in the form of certified artifacts, thus reducing natural resource consumption.

In 2025, inpEV also implemented alternatives to incineration, by forwarding unwashed flexible packaging to co-processing - a method that transforms plastic into an alternative and sustainable source of energy, partially replacing fossil fuels, such as crude oil coke.

Post-consumption leftovers

The System also provides environmentally proper disposal to packaging containing product leftovers - or expired, discontinued or canceled registration products (that are not forbidden). These materials are sent to incineration.



Gold Seal in carbon inventory in the Brazilian GHG Program Protocol, reinforcing its transparency in climate management.





1.49 kg
of avoided CO₂e per
produced 20 liter
Ecoplástica® packaging
(Fundação Eco+ study)

38 certified
artifacts
made using
post-consumption
recycled resin:

- Ecoplástica® crop protection packaging and Ecocap® lids;
- Corrugated ducts and sewage piping;
- Battery shells and signage poles;
- Crossbeams for power utility poles;
- Cardboard molds for industrial and furniture protection.

Education and awareness

Education is one of the pillars that support the Campo Limpo System. By expanding the dialog with agribusiness, students and society, awareness improves understanding regarding waste management, shared responsibilities and circularity. In 2025, our educational efforts combined a nationwide presence, multichannel outreach, partnership expansion and new relationship experiences with the public.

Campo Limpo PEA

The Campo Limpo Environmental Educational Program (PEA) maintained its nationwide outreach and its mobilization capacity, reinforcing this initiative as one of the largest of its kind in the country. PEA complements environmental education for Elementary 4th and 5th grade Education, promoting awareness on solid waste management and environmental conservancy.

+3 million
students impacted
by the Campo Limpo PEA
since 2010

285,000
students benefited
across Brazil in 2025



In the media

Regarding communication, the Campo Limpo System has made headway in repositioning its institutional presence with the new identify campaign "For a better destination" and by valuing the links of the agricultural chain on social networks and in the press. In 2025, around 4,100 articles were published about the Campo Limpo System (a 22% growth) in the main communication vehicles nationwide, such as Band, g1, O Estado de S. Paulo, Terra Viva and Veja Negócios.

35,000
participants
in 2025

39 million
Instagram views

183 million
Facebook views

18 national
and international forums,
conferences and symposiums

2 billion
people: projected audience of
the press broadcasting



National Campo Limpo Day (DNCL)

Celebrated on August 18, DNCL remains as one of the main mobilization moments of the System. In 2025, it involved 141 cities, in 18 states, with 186 activities and more than 35,000 participants.

29 milhões
people reached
by DNCL-related
communication actions

Campo Limpo System Museum

Located in Guariba (SP), the Campo Limpo System Museum offers an immersive experience into the reverse logistics operations involving empty crop protection packaging.

This venue was reopened in August after being restructured - made possible by an incentive law - to offer interactive exhibition resources, such as games, audiovisual resources and an immersion room. In 2025, it received 445 visitors, reinforcing its role as an educational and relational instrument with students, partners and the community.



Economic performance

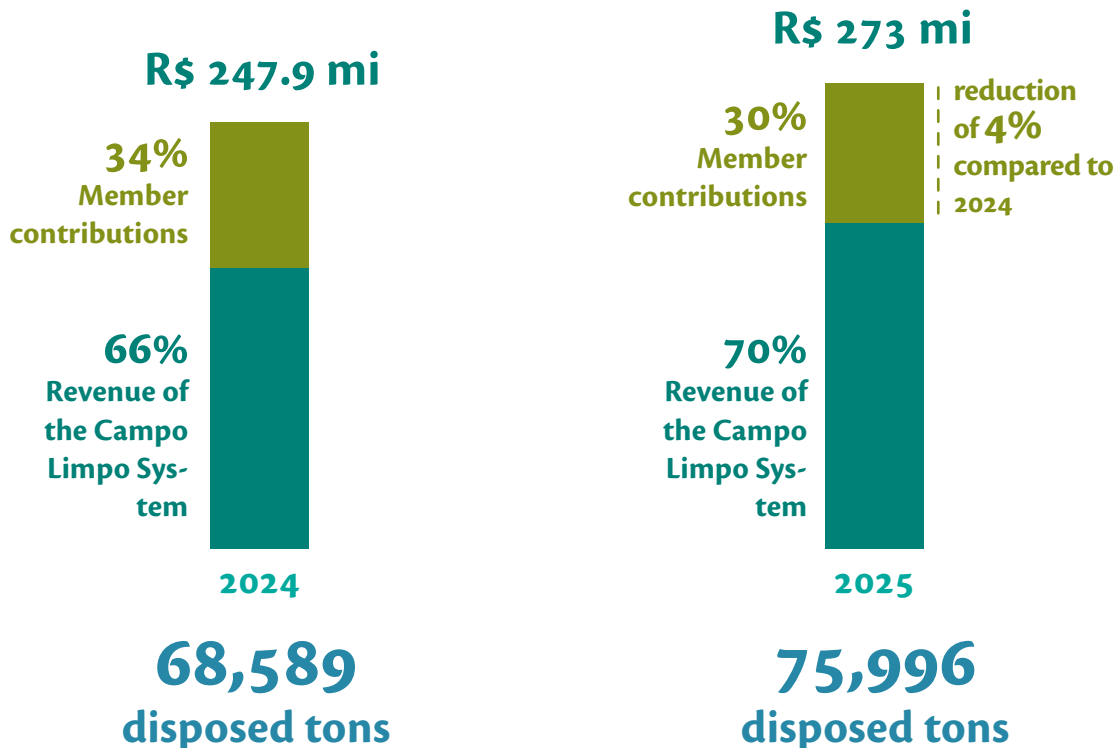
Year after year, the Campo Limpo System expands its reverse logistics efficiency for crop protection packaging in Brazil. In 2025, inpEV's economic performance confirmed this trend: despite an 11% increase in disposed volume, the System was more efficient. An indicator that proves this was the 5% reduction in operational expenses per disposed kilogram in 2025.

This performance reflects management focused on reducing operational costs that impact the System's links. As a result, the share contributed by manufacturing companies to defray the Institute's

operations dropped from 34% to 30%. These member defrayals continue to be the main source of revenue, since inpEV does not receive financial support from the government nor from credit agencies.

Two other sources complement the costing of the System: provision of environmental services to certified recyclers and fixed asset rental to Campo Limpo Plastic Transformation and Recycling S.A. Together, they contribute to reduce the cost defrayed by members and strengthen the financial sustainability of the Campo Limpo System.

Disposal operational expenses and income sources



Credits

Coordination

Presidency and Sustainability (inpEV)

ESG Consultancy, editorship and *design*

Conecta Conteúdo e Sustentabilidade

Sagarana Editorial

Girafa Não Fala

Photos

inpEV library



inpEV

Manufacturing industry representative of
the Campo Limpo System



/inpevbrasil

Campo Limpo System

Brazilian reverse logistics program
for empty crop protection packaging

sistamacampolimpo.org.br



/sistamacampolimpo



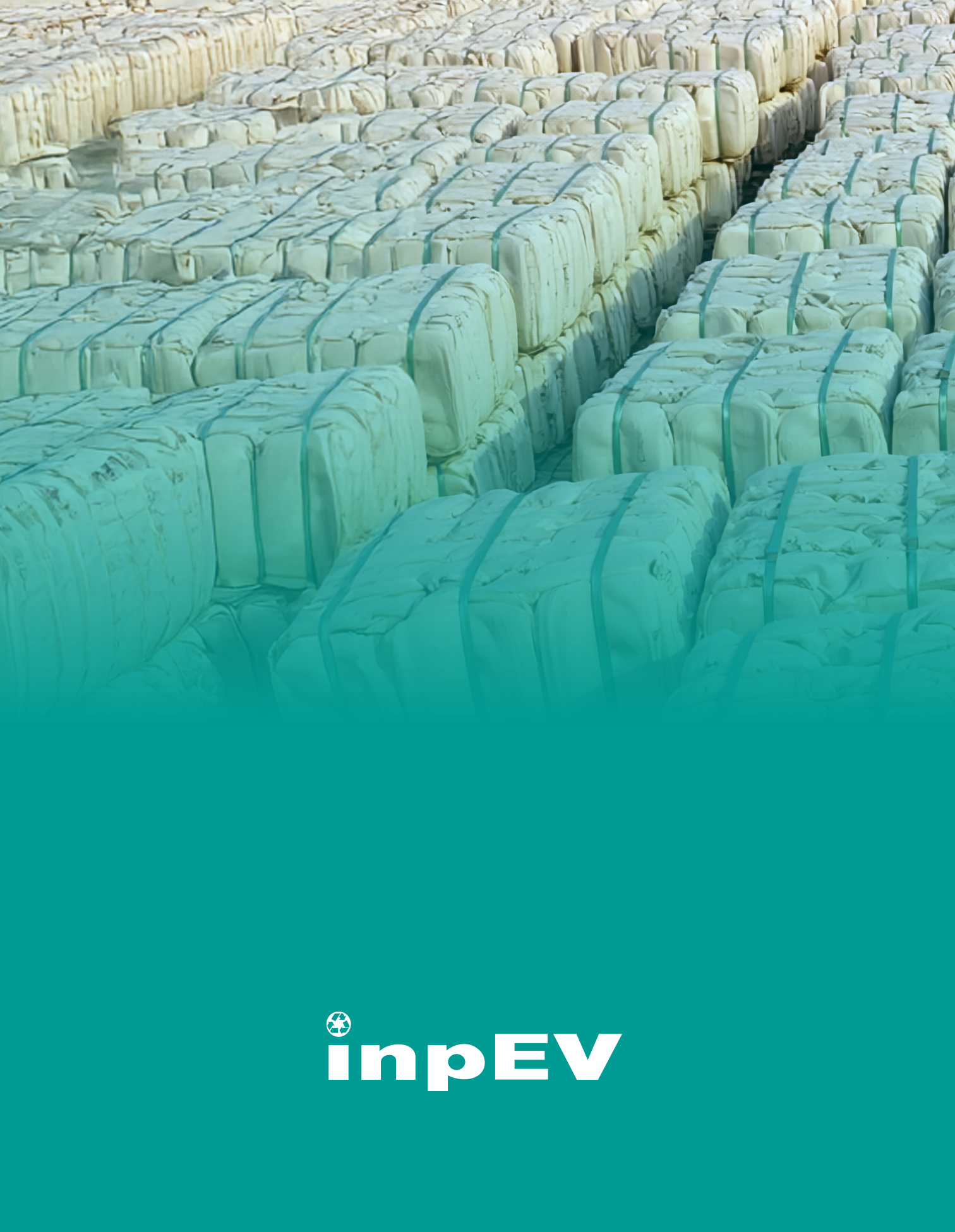
/sistamacampolimpo



@sistamacampolimpo



/sistamacampolimpo



 **inpEV**